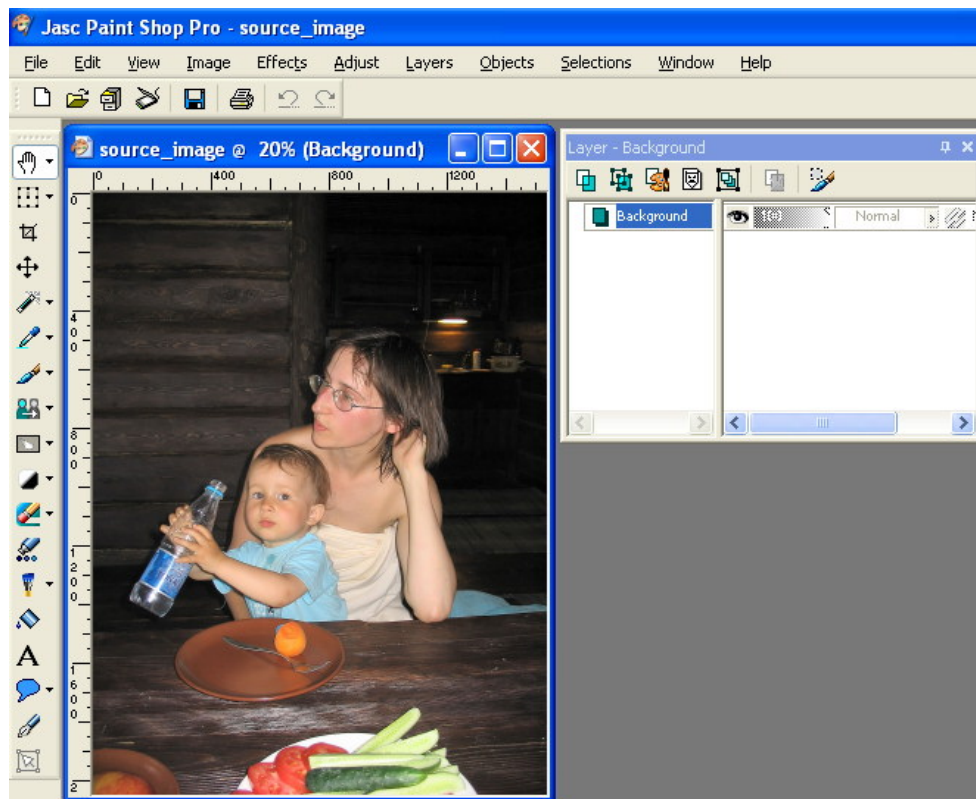




How to make “Out of bounds” images

This tutorial will show you how to make an image jump out of frame using extraction tool and frames.

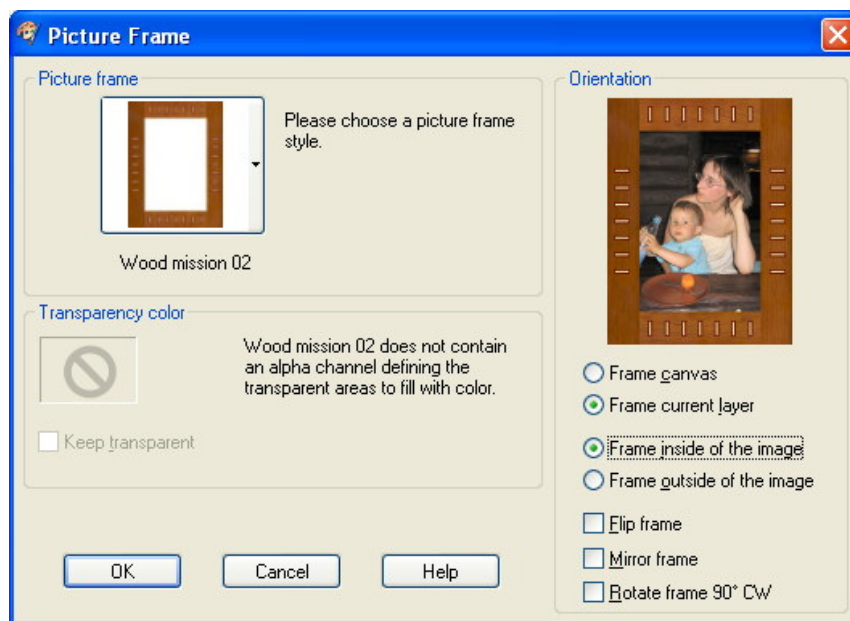
Step1: Open an image



To open an image, choose **File > Open**. Browse for the image file then click **OK**

ImageSkill tutorial: How to make “Out of bounds” image.

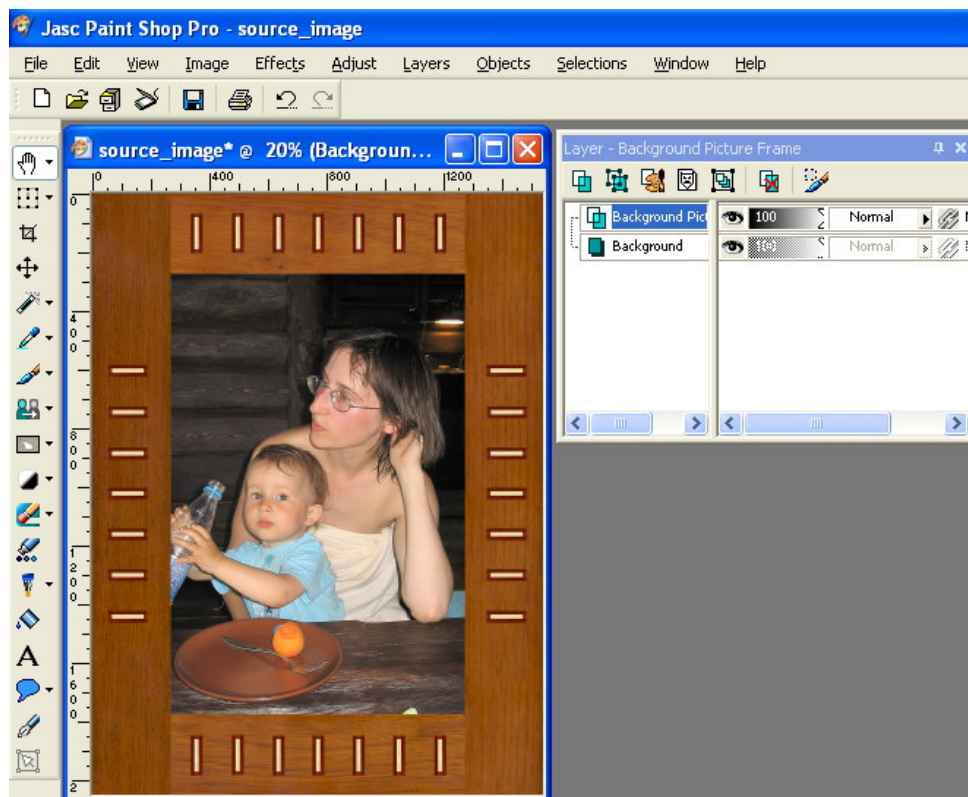
Step2: Add frame to your image



Turn on **Frame current layer** and **Frame inside of the image** radio-buttons in Orientation section.

Using command **Image->Picture Frame** put frame you like on new layer.

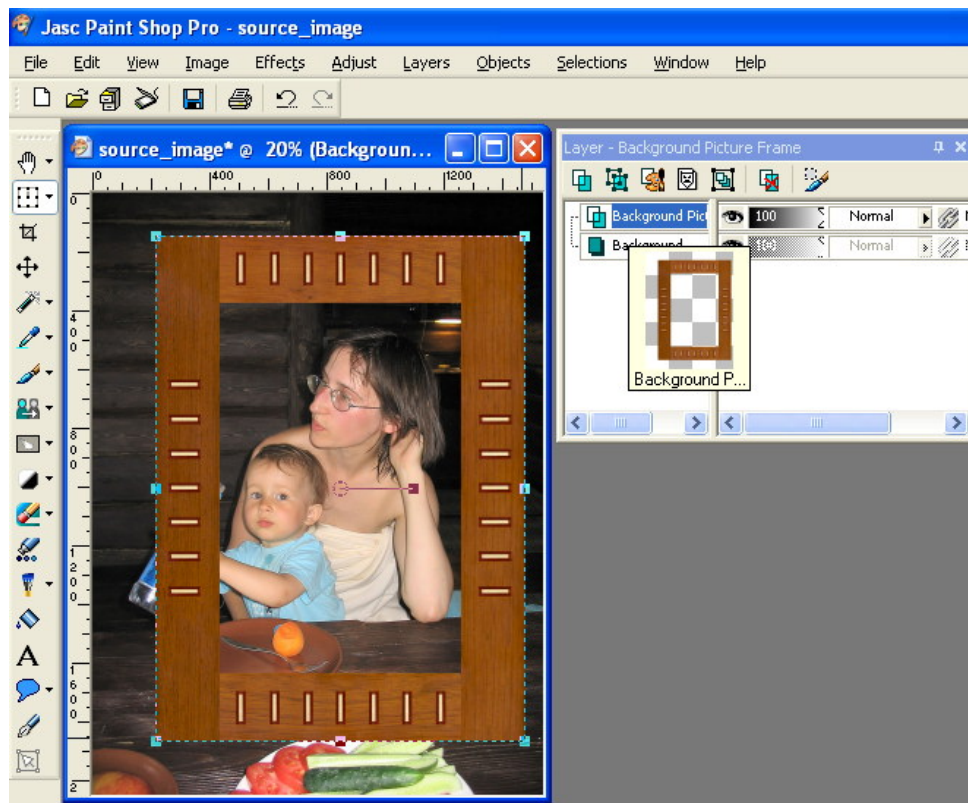
You need not to use Paint Shop Pro stock frames only. You can take any program or plugin for frame creation, for example [Image Frame](#) by [ImageSkill Software](#). It is important to create image frame in new layer.



You can see two layers on the image – the first one is our original image with the file name “Background”, the second one is an image frame with the file name “Background Picture Frame”.

You can show layers in “Layer” palette (**View->Palettes->Layer**, hot-key is **F8**).

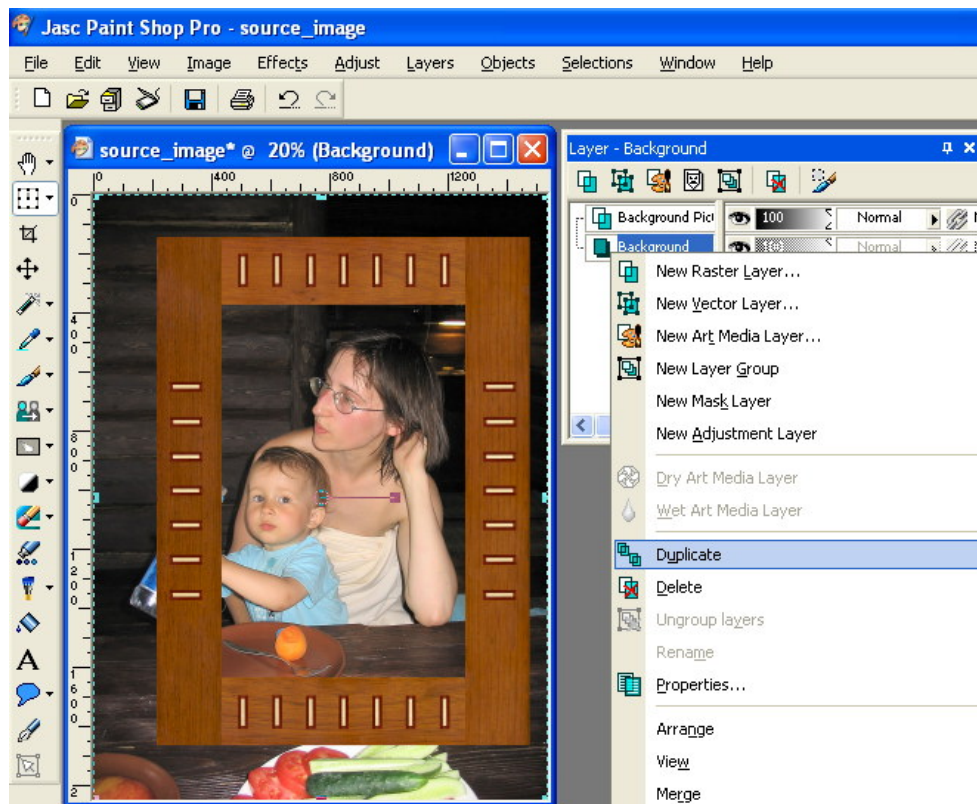
ImageSkill tutorial: How to make “Out of bounds” image.



You can adjust your frame by **Deform tool** (hot-key is “D”).

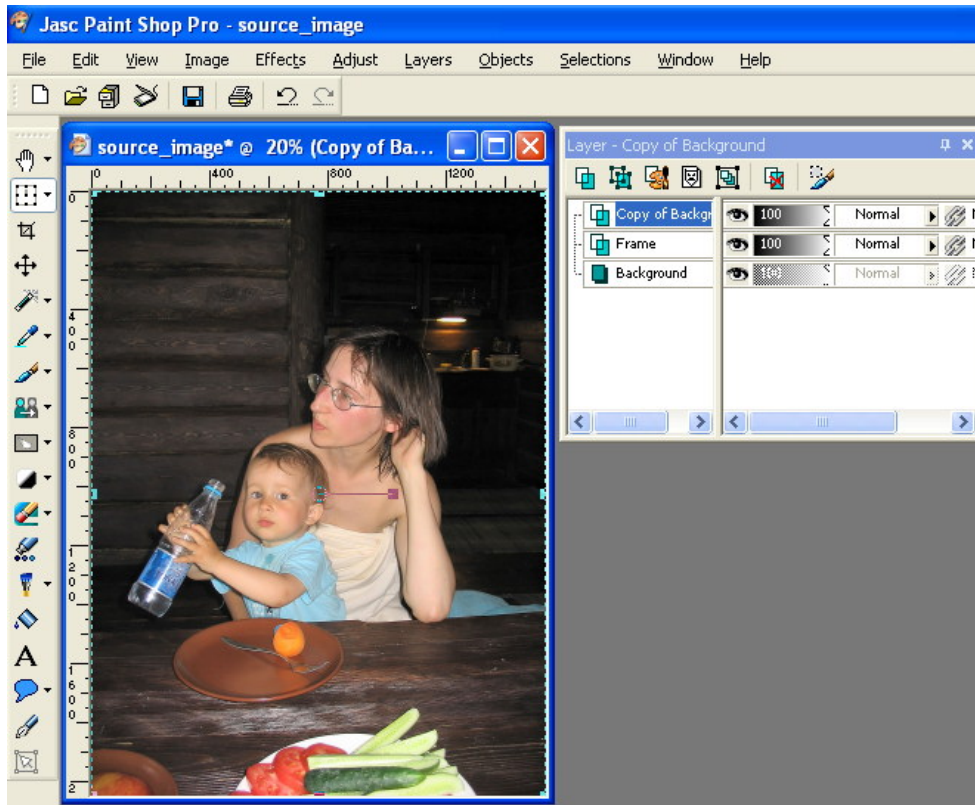
Stretch and move image frame in order to achieve desirable effect.

Step3: Duplicate original image



In “Layer” palette select “Background” layer to choose an original image and duplicate it using right-click drop-down menu or **Layers->Duplicate** command.

ImageSkill tutorial: How to make “Out of bounds” image.



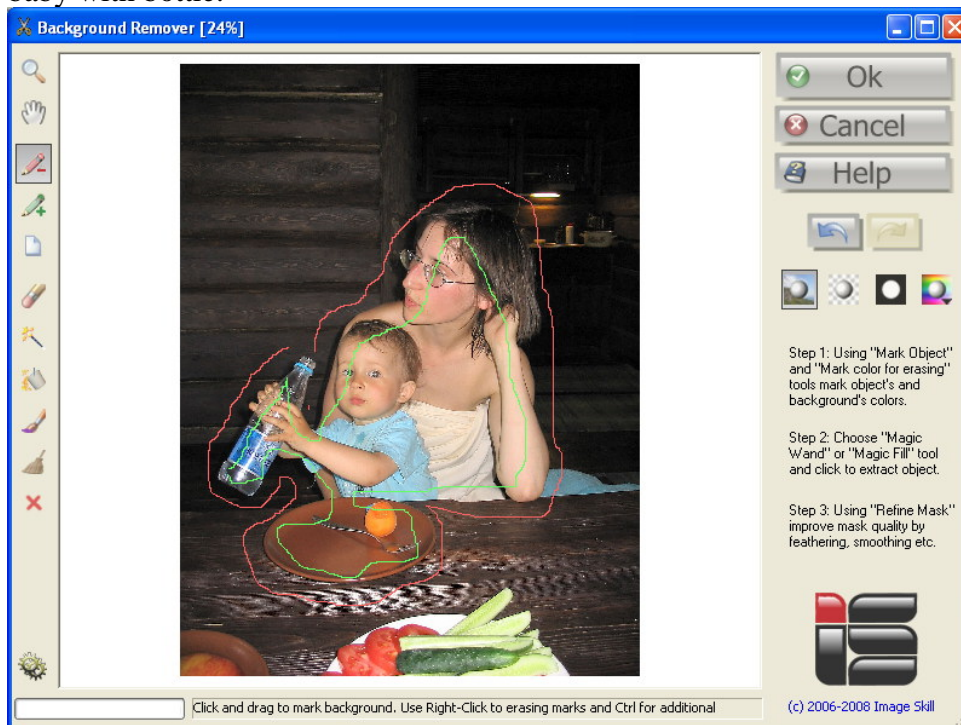
You just have now 3 layers listed from bottom to top: “Background” - original image, “Copy of Background” - copy of original image, “Background Picture Frame” - image frame.

Move the second layer “Copy of Background” to top using mouse or **Layers->Arrange->Bring to Top** command.

At present you have the copy of original image as the top layer, the image frame as the middle layer and the source image as the bottom layer.

Step4: Extract all parts of the image that are to be jumped out of frame

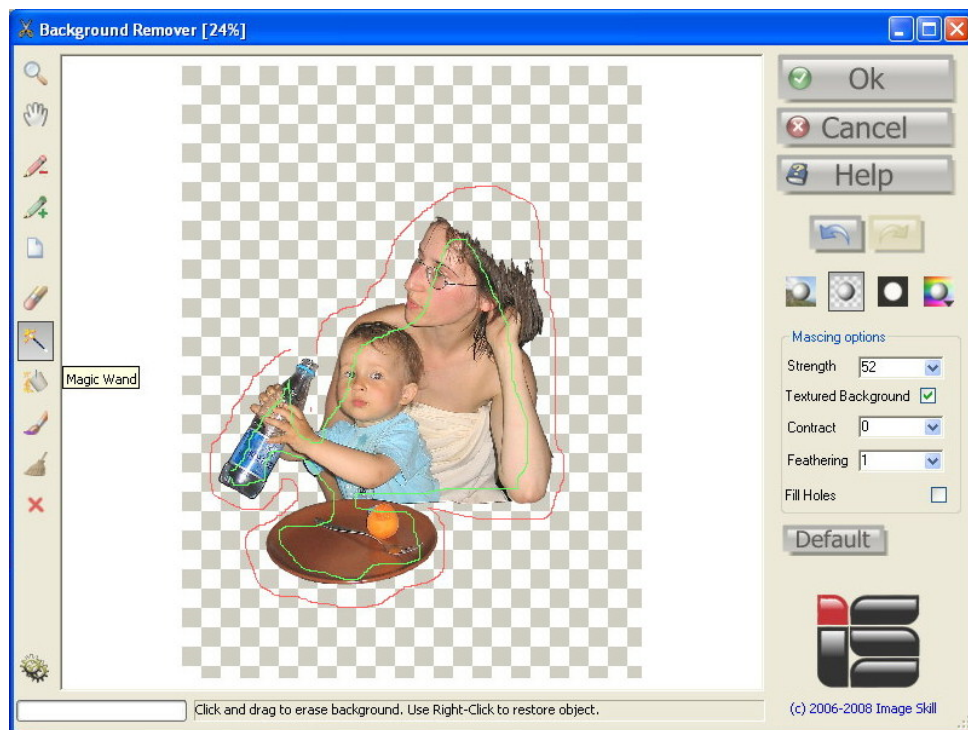
To achieve “Out of bounds” effect you should put all parts of the image having this effect on image frame. Run [Background Remover](#) plug-in by **Effects->ImageSkill->Background Remover 3** and extract the baby with bottle.



Mark object and background by green and red line (tools “Mark Object” and “Mark color for erasing”).

You can switch between mode by Ctrl modification and erase wrong marks by right-mouse click.

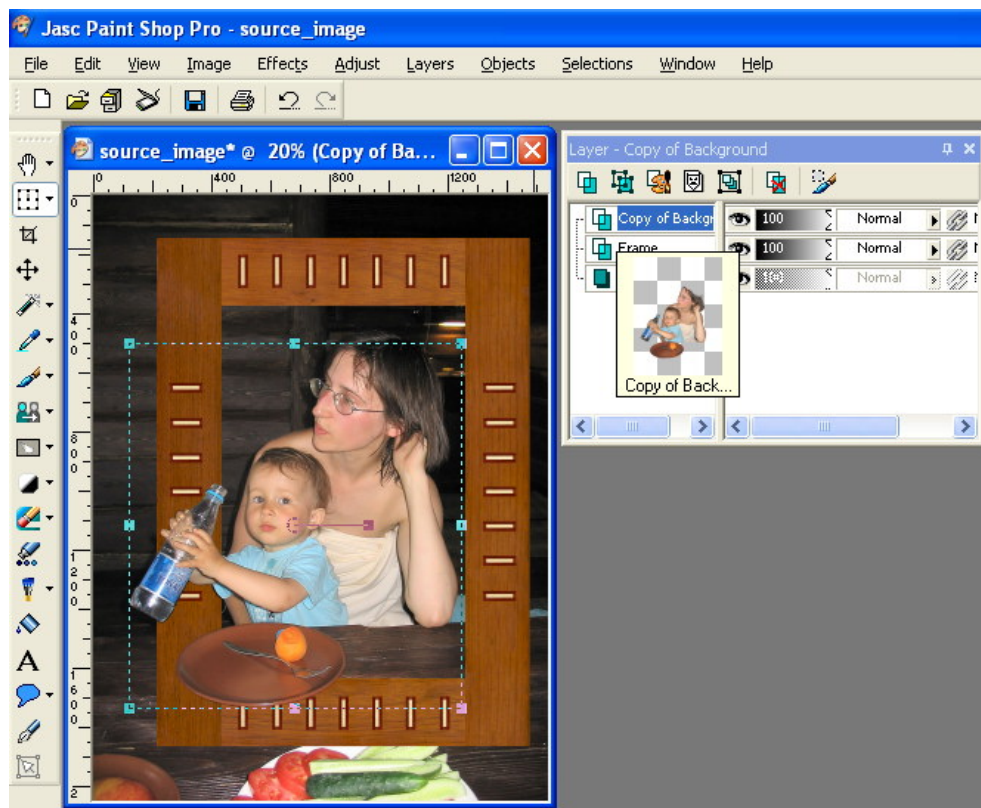
ImageSkill tutorial: How to make “Out of bounds” image.



Select “Magic Wand” tool and make a mouse click.

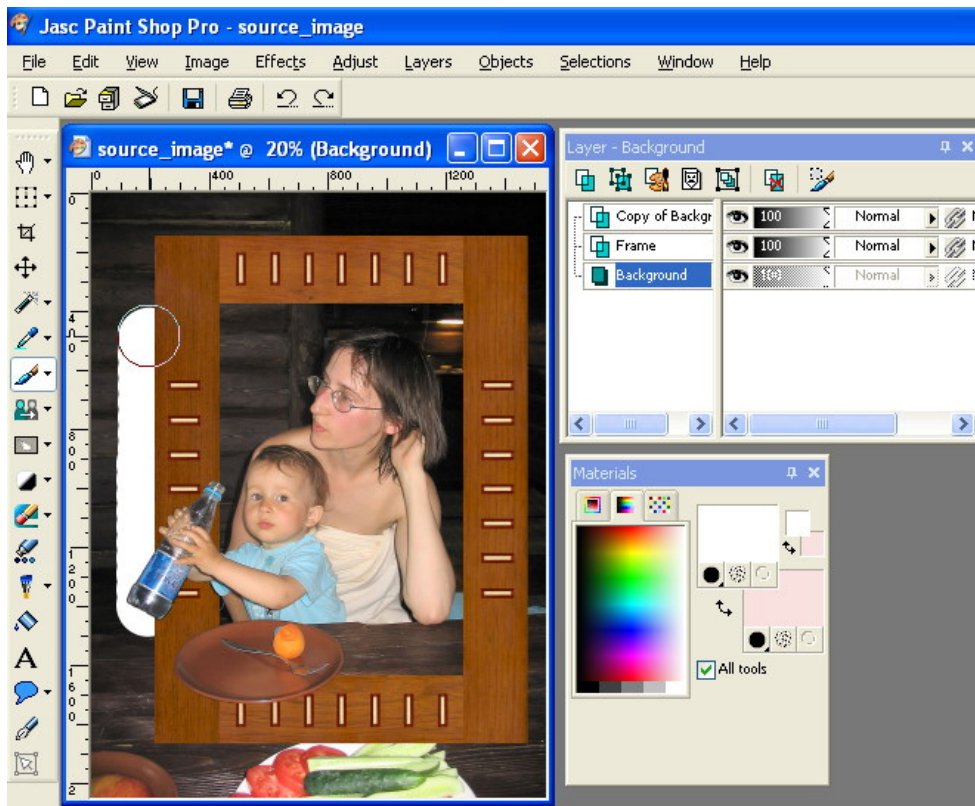
After extraction press OK button and return to Paint Shop Pro.

Of course, you can extract all jumped out parts of the image you need by using any other tool (**Manual Eraser, Selection tool, Magic Wand** etc.).



Here you have almost ready “Out of bounds” image.

ImageSkill tutorial: How to make “Out of bounds” image.

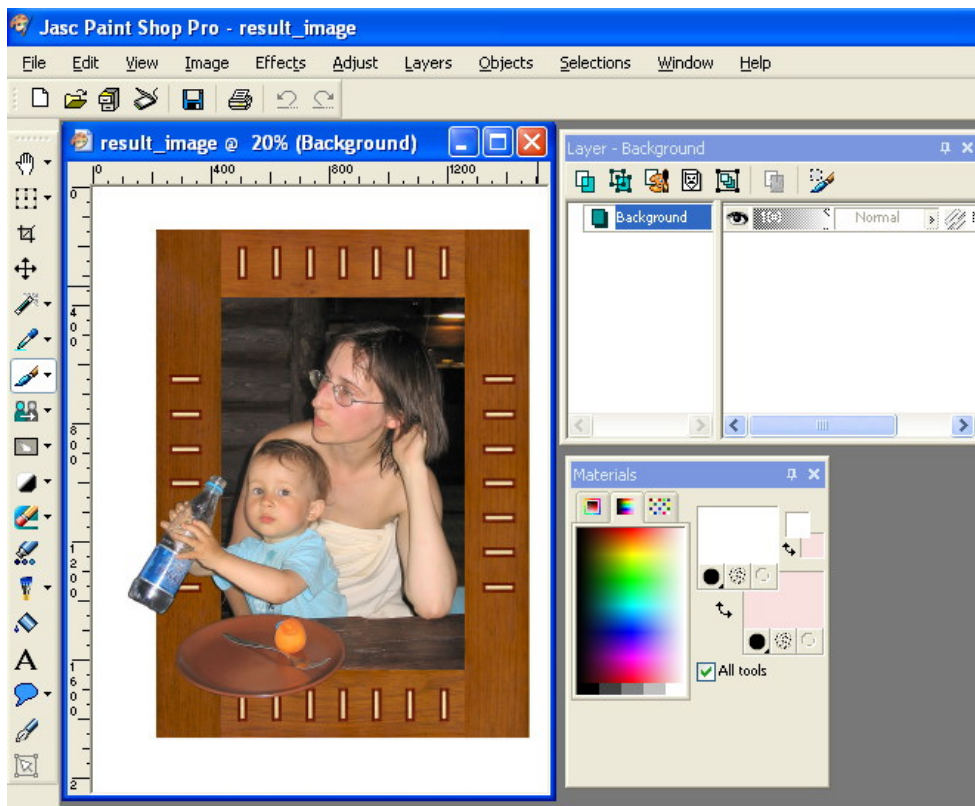


To strengthen effect you can erase parts beyond the image frame.

Make the original image active selecting the bottom layer in “Layers” palette Choose **Paint Brush** tool (hot-key is “B”).

Select desirable color (for example white) and paint all parts beyond the image frame.

If you want to make parts beyond the image frame transparent instead of coloring, choose **Eraser** tool (hot-key is “X”).



Merge the result using **Layer->Merge->Merge All (Flatten)** and save result in suitable graphic format (BMP, JPEG etc.)

Note: if you erase parts beyond the image frame instead of coloring them, do not merge image, but simply save it in PNG format.

ImageSkill tutorial: How to make “Out of bounds” image.



Good luck