



# ImageSkill Software

## PixPattern v 1.0

### User's Manual

#### Table of Contents

ImageSkill Software .....	1
PixPattern v 1.0.....	1
User's Manual.....	1
Introduction.....	2
Features at glance.....	2
System Requirements .....	2
Getting Technical Support .....	2
Getting Started.....	3
Installing and uninstalling.....	3
User interface.....	4
A. Toolbar .....	5
B. Processing parameters.....	5
Working with PixPattern .....	6
Source data.....	6
Change language .....	6
Starting PixPattern.....	6
Scripting (Actions) feature .....	8
FAQ and Troubleshooting .....	12
I can not find PixPattern in graphic host's effect menu.....	12
I can not run PixPattern or PixPattern is grey out in graphic host's effect menu.....	12
How does plug-in process selection? .....	12

## Introduction

PixPattern is a Photoshop-compatible plug-in for Windows designed by ImageSkill Software that can work with both commercial software like Adobe Photoshop, Adobe Photoshop Elements, Corel (Jasc) Paint Shop Pro, Microsoft Digital Image Suite, and free software like XnView, IrfanView.

It allows you to apply beautiful, mosaic, artistic effects to your photos by choosing a mosaic type from a predefined set of differing mosaic shapes. The plugin keeps the original color content of your photo being able to keep the same color within any separate mosaic element. You can enhance the mosaic effect by adjusting the size and orientation of the mosaic elements. PixPattern has a stylish, user-friendly, intuitive, multi-lingual interface.

## Features at glance

- Original algorithm of an image transformation into a mosaic
- Wide effects range
- Support script/action
- 16-bit image support
- Multilingual interface (English, German, French, Spanish, Russian)

## System Requirements

Computer	Pentium 400MHz
Operation System	Win2000, Win2003, Win XP, Win NT, Vista, Win7 (both 32 and 64 bits)
Hard Drive	you must have free space about 10 Mb
RAM	64Mb
Miscellaneous	mouse or other pointing device

***You must have suitable graphic host software (see below)***

## Getting Technical Support

If you have any trouble, questions, feature requests or notes please contact us at the following addresses:

E-Mail: [support@imageskill.com](mailto:support@imageskill.com)

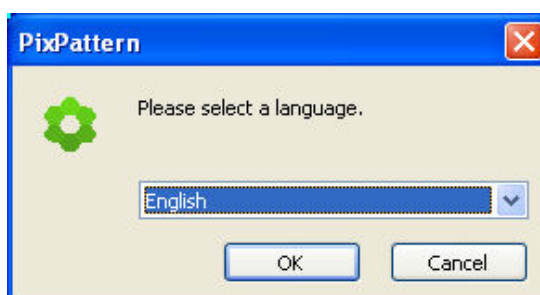
Web site: <http://forum.imageskill.com>

You can get the help you really need!

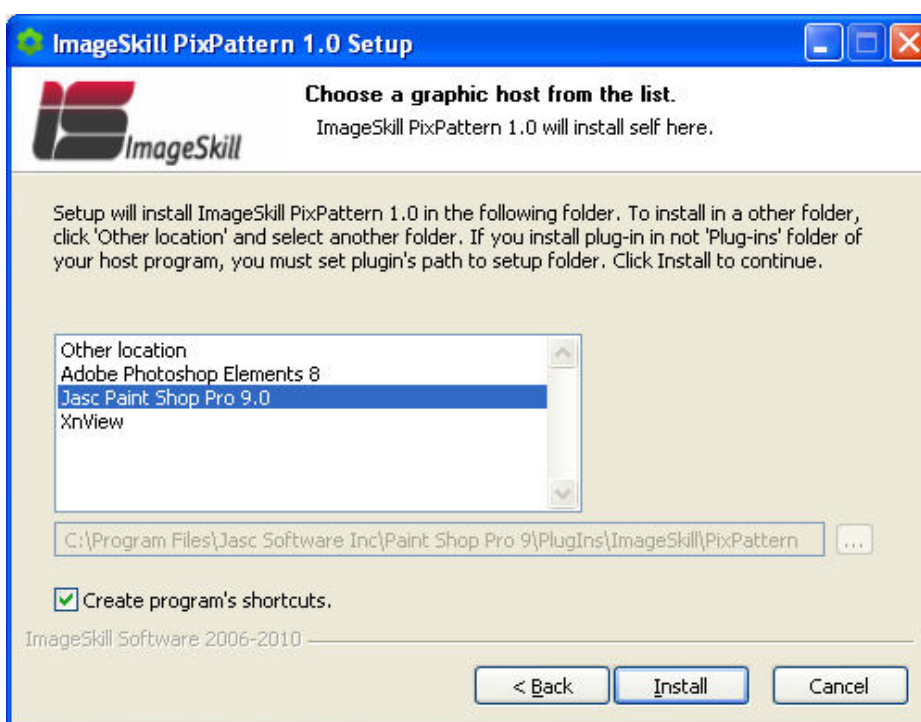
## Getting Started

### Installing and uninstalling

Run setup file. Installer's engine automatically selects an appropriate language during installation but still leaves a way for the user to choose language manually from the drop-list.



Then the program will ask you to close all other of the running applications. After accepting the terms of agreement the installer finds suitable graphic hosts. Choose one of them from a list. If you want to install plug-in in other folder, select item "Other path" and set folder for installation. In this case you must set "Plug-ins path" of your graphic host to setup folder.



Plug-in can work under the following graphics host properly

- Adobe Photoshop 7, CS, CS2, CS3, CS4
- Adobe Photoshop Elements 3, 4, 5, 6, 7, 8
- Jasc Paint Shop Pro 7, 8, 9
- Corel Paint Shop Pro (Photo) X, X1,X2, X2 Ultimate
- Corel Photo Paint 11,12, X4
- Xara Xtreme, Xara Xtreme Pro
- Microsoft Digital Image Suite 2006

Plug-in may be compatible with other graphic hosts as well.

In order to uninstall plug-in run uninstaller (file uninstall.exe) or use **Add and Remove Programs** item in the **Control Panel** of **Start Menu**.

## User interface

PixPattern has 2 main sections (see description below):

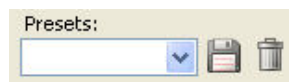
- A: Toolbar
- B: Processing parameters

Pressing the "OK" button causes the returning to graphic host with applying object extracting.

Pressing the "Cancel" button causes the returning to graphic host without source image changing.

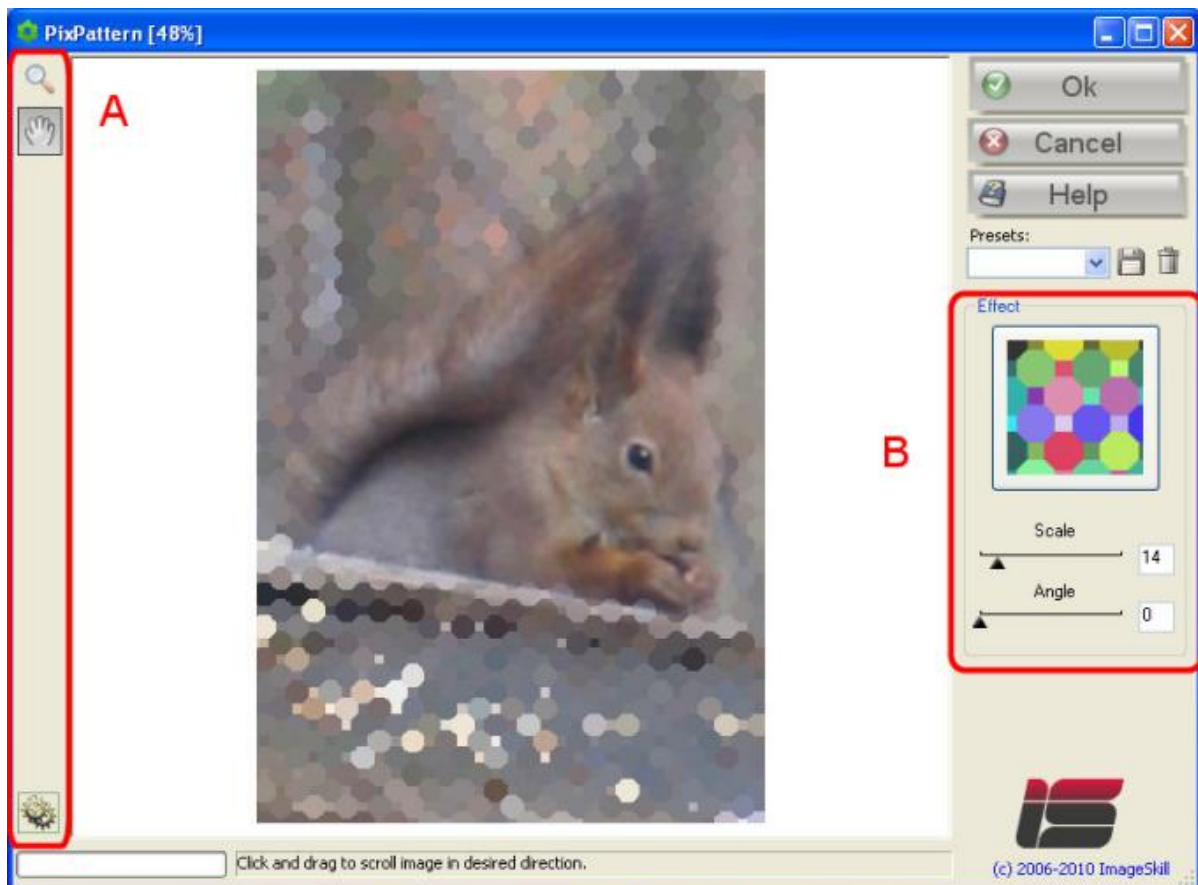
The "Help" button runs short HTML help.

You can save and load set of parameters in preset files.



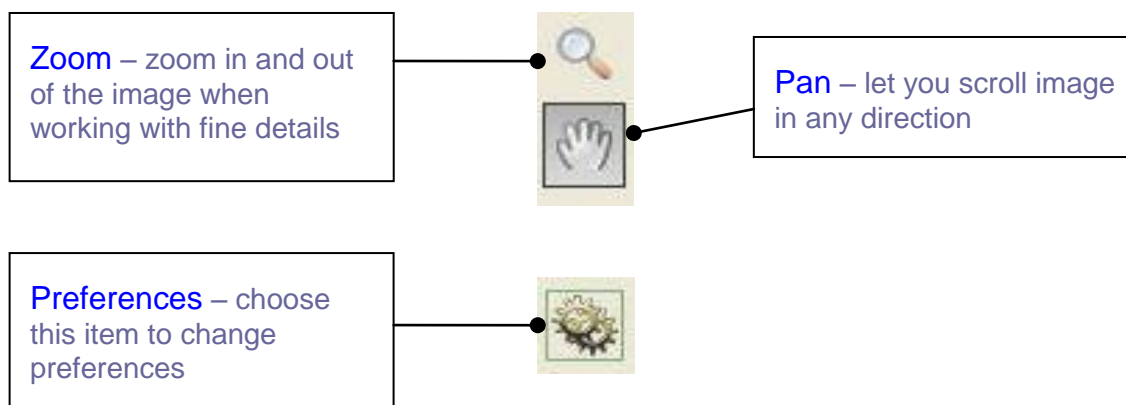
Preset is a file where values of plug-in parameter are written. You can add and delete any preset except "Default".

Plug-in processes image data automatically after any parameters changing.






Progress bar and prompting line are placed at the bottom of the main window.

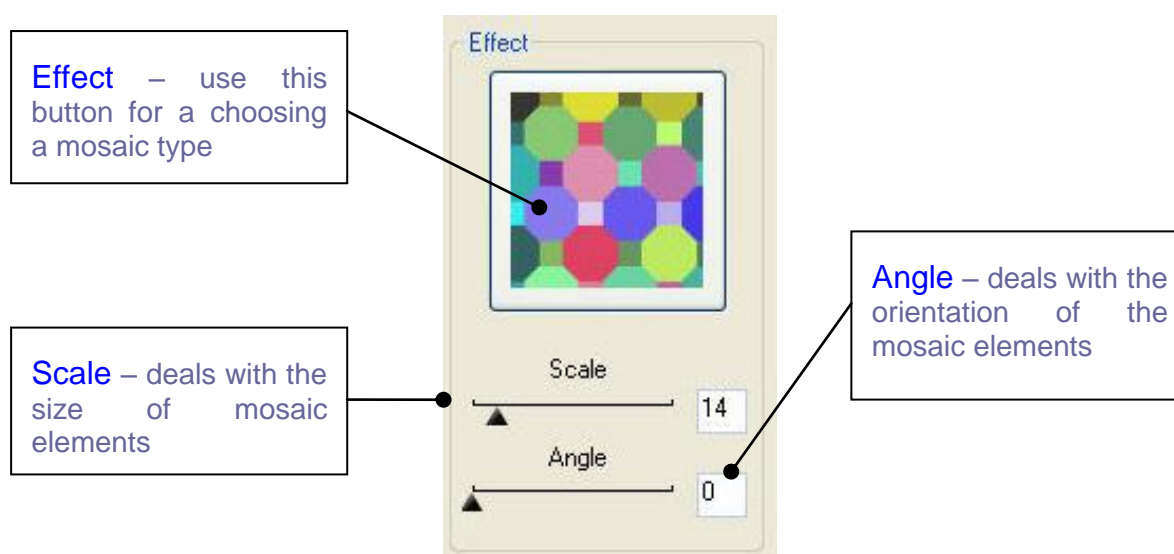
## A. Toolbar



The active tool is marked by black border.

Tool Name	Description
 <b>Zoom</b>	Zoom in and out of the image when working with fine details. Click to zoom-in. Right-click to zoom out. Use mouse wheel to zoom. The title bar of the main window displays the zoom percentage.
 <b>Pan</b>	Let you scroll image in any direction. Click and drag to scroll image in a desired direction.
 <b>Preferences</b>	Using this item you can change preferences like chessboard size and color, selection annotation, and language.

## B. Processing parameters



## Working with PixPattern

All example commands and images shown below are valid for Corel Paint Shop Pro Photo X2.


### Source data

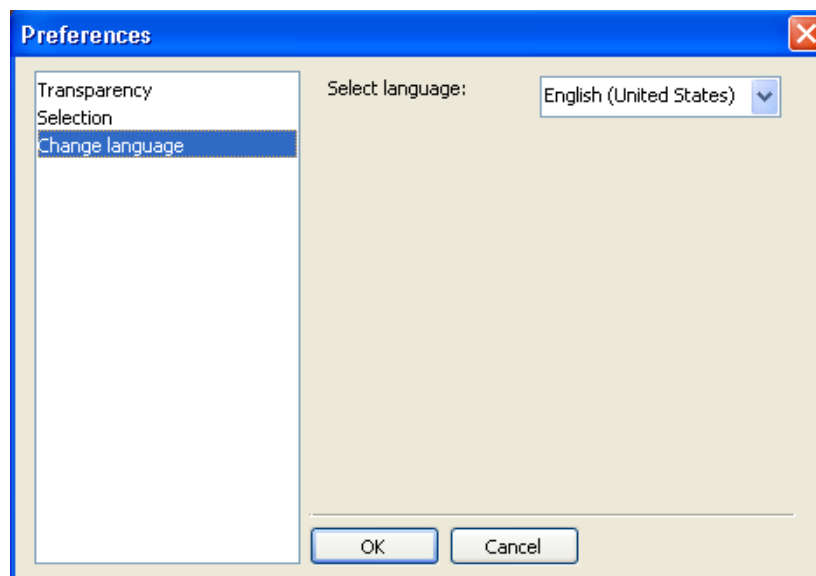
Plug-in can process RGB or Grayscale image with 8 or 16 bits/channel only with or without transparency. If you have an image in another mode (CMYK, LAB etc.) – PixPattern will be disabled in the “Effect” menu.

If you want to work with palette image (like GIF, palette BMP etc) you must transform it to 24 bit color image at first using [Image->Increase Color Depth->16 Millions Colors \(24 bits\)](#).

### Change language

The PixPattern has five-lingual interface (English, German, French, Spanish and Russian). To change the language in the process of working with the plug-in you need to click on [Preferences](#)

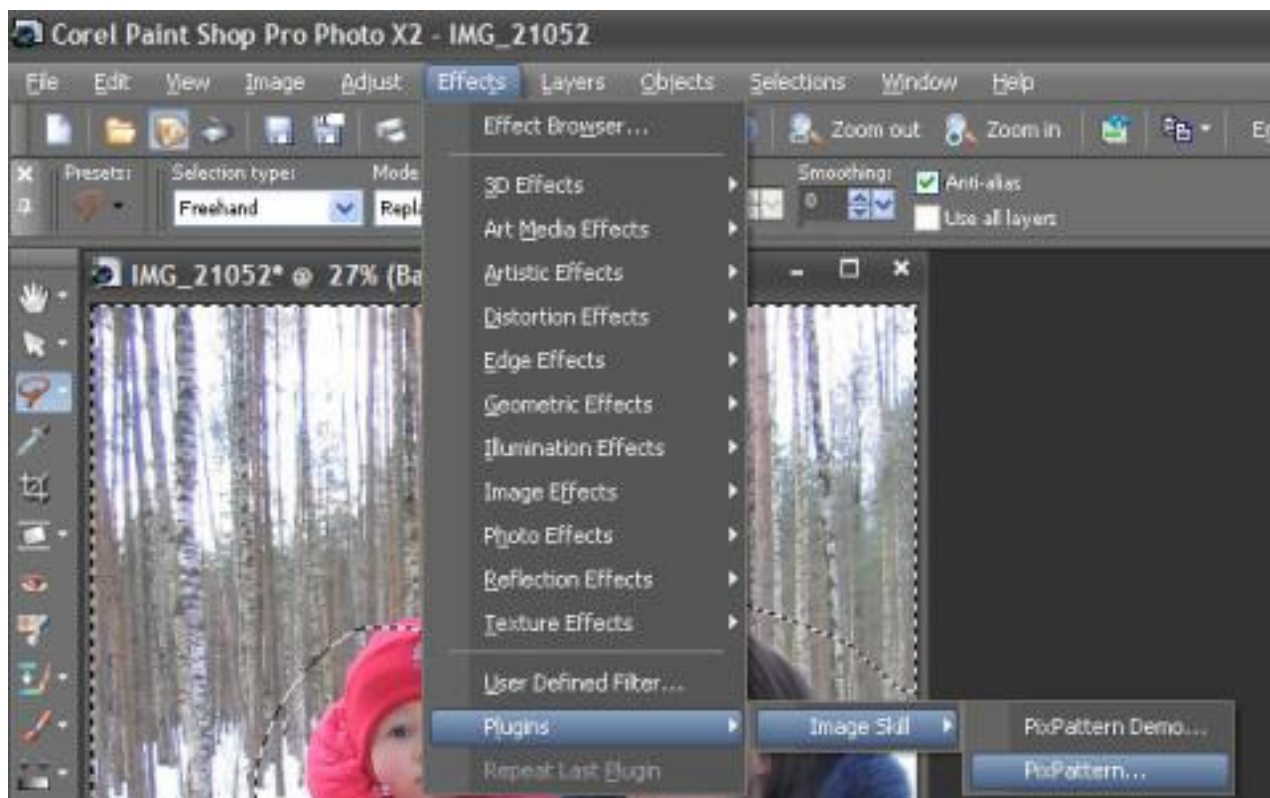
item  and select “Change language”. Then choose an appropriate language from the drop-list and click OK button. Close the application and restart it again to apply the new language.



### Starting PixPattern

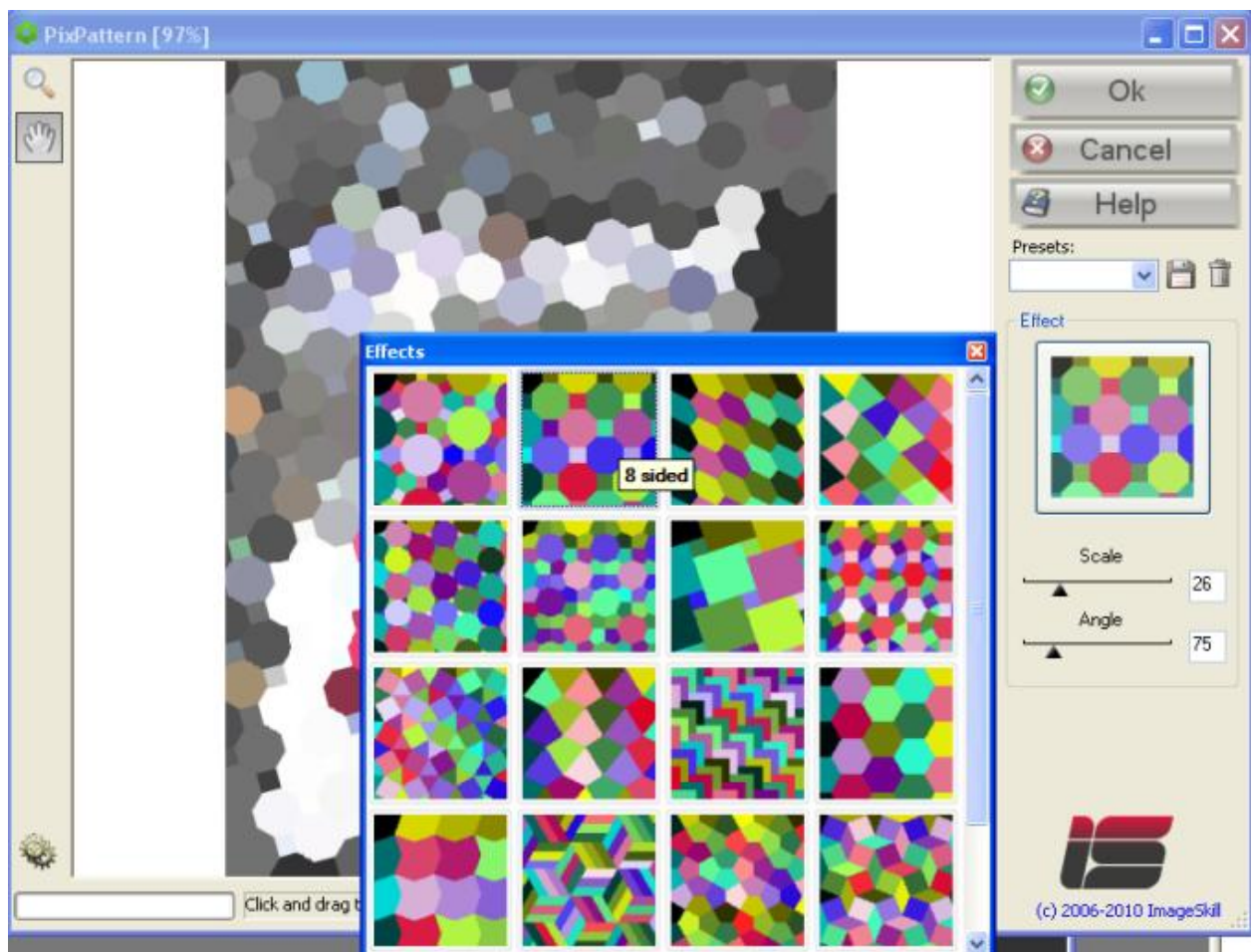
Run your graphic host. Open an image (for example camera shot in JPG graphic format). Now you can run the PixPattern plug-in. (use "Effects->Plugins->Image Skill->PixPattern" menu item).

So, just now we have suitable data (RGB image with 8bit/chanall) and we can run PixPattern using [“Effects->Plugins->Image Skill->PixPattern”](#) command.



If you do not see PixPattern in menu, see our tutorial See [How to attach plugin to Corel \(Jasc\) PaintShopPro](http://forum.imageskill.com/index.php/topic.1551.0.html) at our forum (<http://forum.imageskill.com/index.php/topic.1551.0.html>)

Adjust plug-in parameters to achieve a desirable result. See parameters description above.



Press OK button and return to the host.

## Scripting (Actions) feature

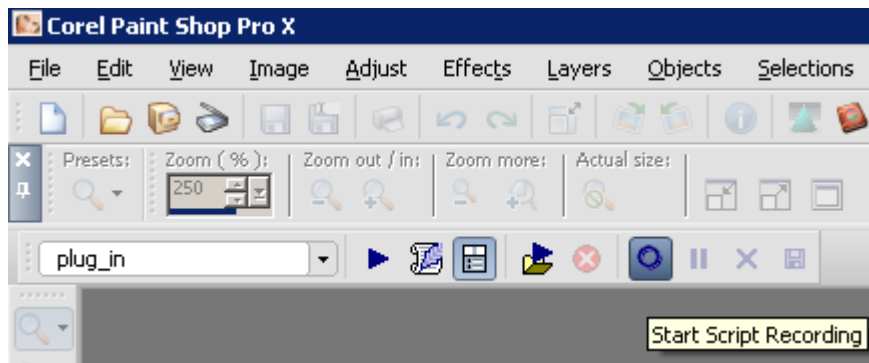
Some graphic hosts support scripting feature. In Corel (Jasc) Paint Shop Pro 8, 9, X, X1, X2 it named as “scripts”, in Adobe PhotoShop 6, 7, CS, CS2 – “actions”.

Using this option you can batch process a few images.

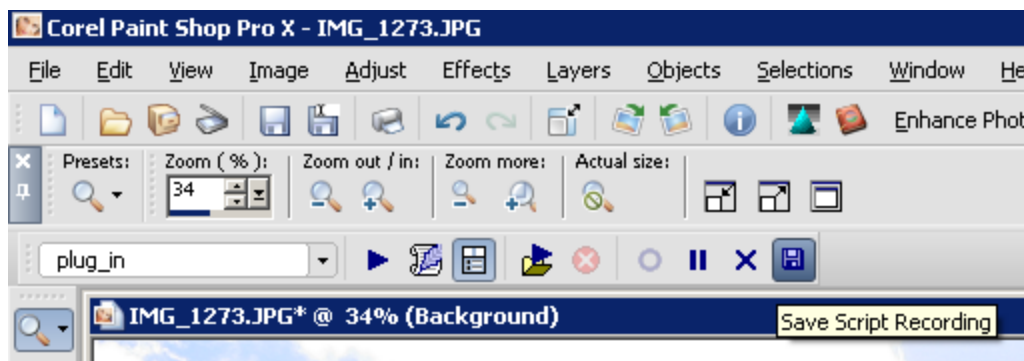
You have to create script (action) at first.

- Open an image.
- Start script recording (“File->Script->Start Script Recordind” or button on script tool bar).

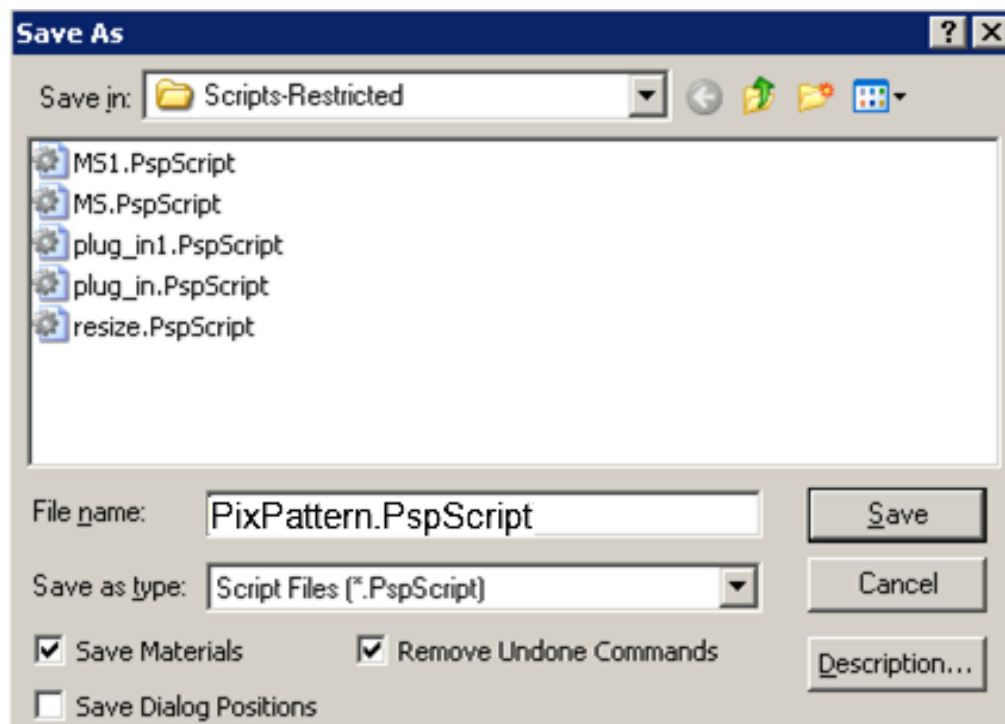




- Run PixPattern plug-in (“Effects->Plugins->Image Skill->PixPattern”)
- Adjust plug-in parameter for achieve desirable result. Press **OK** button.
- Save script recording (“File->Script->Save Recordind” or button on script tool bar).



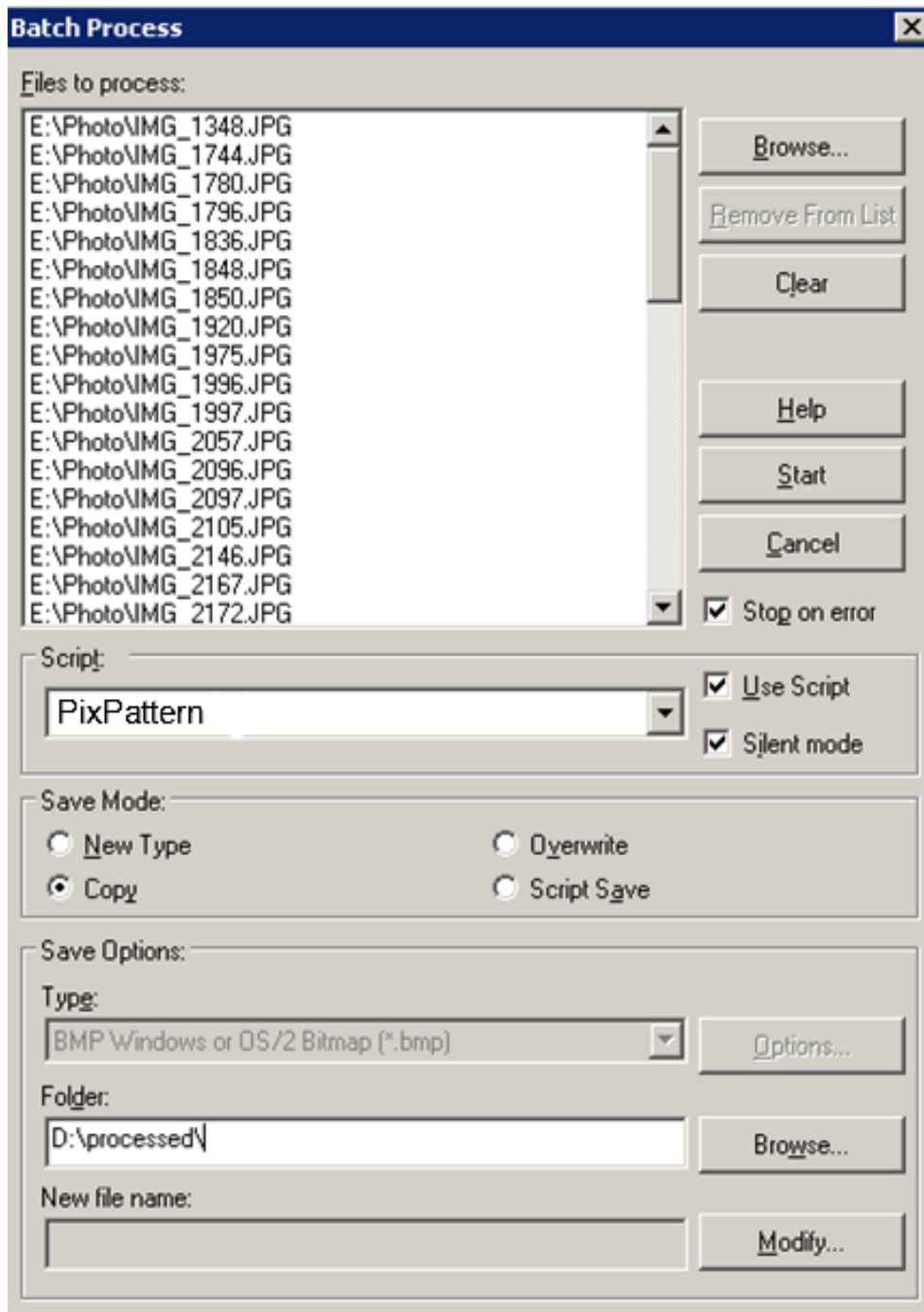
Save script as “PixPattern.PspScript” for example.



Now you have script that executes PixPattern plug-in, by default this script is saved in "Script-Restricted" folder (see more detail in PSP help). So you can use this script for images batch processing or you can "Customize" your workspace by placing a button for this script to a toolbar.

### Batch Processing

Run Batch Process command ("File->Batch Process").



Select images for processing by "Browse" button.

Choose "PixPattern" as script.

You can run it in "Silent" mode, and then all images will be processed with the same plug-in parameters as you recorded script. The plug-in windows won't be appearing.

If you run it in "Interactive" mode, you will be able to adjust plug-in parameters in plug-in's main window.

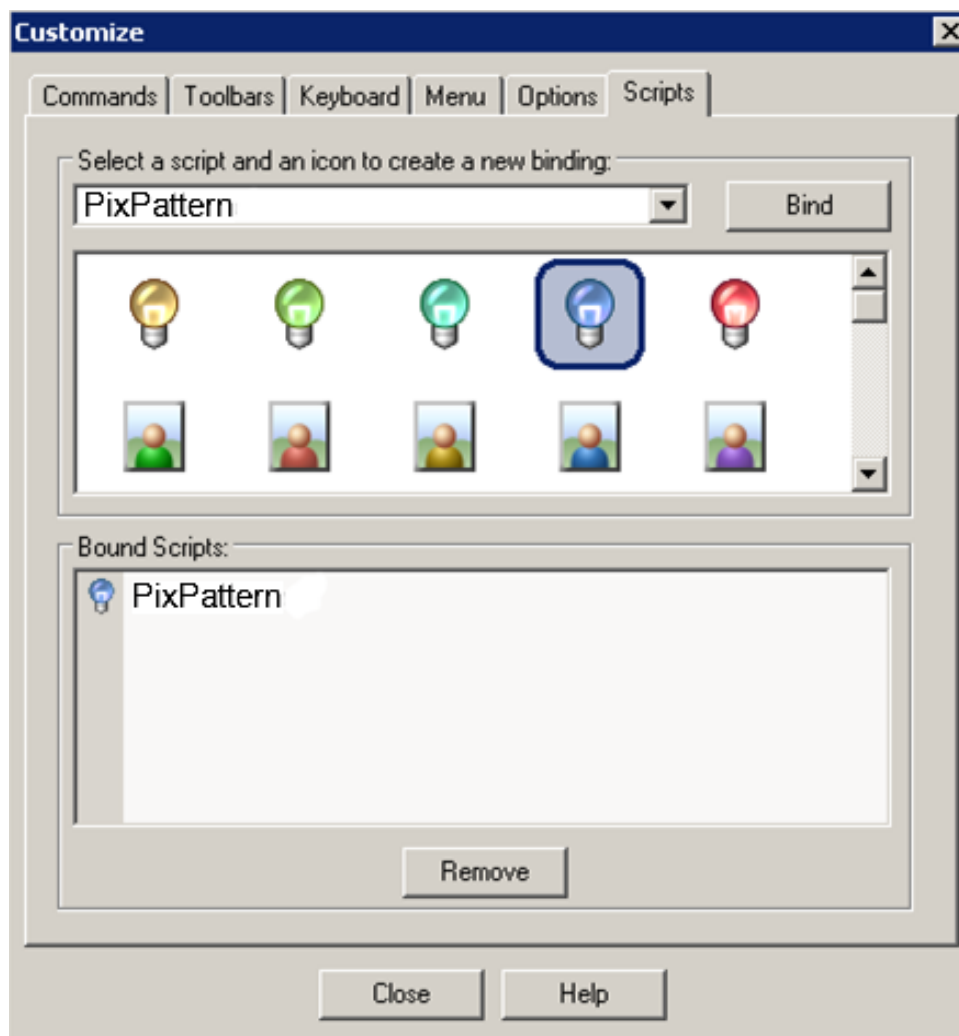
Result will be saved depending on "Save Mode" parameter. Choose the "Copy" and set output folder. In this case the result will be saved in this folder with the same name.

Press "Start" button. The selected images will be processed.

### Customize your workspace

You can customize your workspace in Corel (JASC) Paint Shop Pro family.

- Run “**Customize**” command (“**View->Customize**”)
- Choose “**Script**” tab
- Select “PixPattern” script, select desirable icon form thumbnails below
- Press “**Bind**” button.



Now you can place this button on any toolbar for PixPattern quick launch.

NOTE: Adobe Photoshop 7, CS, CS2 have the similar possibilities for scripting creation and batch processing. For details see Adobe Photoshop help.

## FAQ and Troubleshooting

### I can not find PixPattern in graphic host's effect menu.

The PixPattern like other our products is Adobe -compatible plugin. It is mean, that this product can work as plug-in with any graphic editor, that supports Photoshop's plug-ins (Corel(Jasc) Paint Shop Pro 7, 8, 9, X, X1, X2, XnView, All Adobe graphic family etc.).

In most cases installer detects the suitable host automatically and copy plugin in needed place. But some cases (alpha or beta version of products, international or custom version) installer fail. But any case you can attach plugin to host.

Check is there plug-in in "Plug-Ins" graphic host's folder, or set path to plug-in using graphic host's "Preferences" option. Re-run your graphic application.

For Corel PSPX 2 you can find Background Remover in "[Effects->Plugins->Image Skill](#)" menu.

You can see how to attach plugin to Corel (Jasc) PaintShopPro  
<http://forum.imageskill.com/index.php/topic,1551.0.html>

For Adobe family you can find Background Remover in "[Filters->Plugins->Image Skill](#)" menu.

You can see how to attach plugin to Adobe graphic family (Photoshop, PhotoShop Elements)  
<http://forum.imageskill.com/index.php/topic,1128.msg1210.html#msg1210>

If you have no graphic editor you can use Background remover with good free editor XnView:  
<http://forum.imageskill.com/index.php/topic,1502.0.html>

### I can not run PixPattern or PixPattern is grey out in graphic host's effect menu.

Graphic hosts disable the plug-in if the current image is not suitable for use with Background Remover. Image must be in RGB format with 8 or 16 bit/channel and must have a layer (i.e. image must have 4 channels: R, G, B, and Alpha). If image has CMYK, LAB, Grayscale or something other than RGB format, you have to convert it to RGB. If image has no layer you have to create it at first.

### How does plug-in process selection?

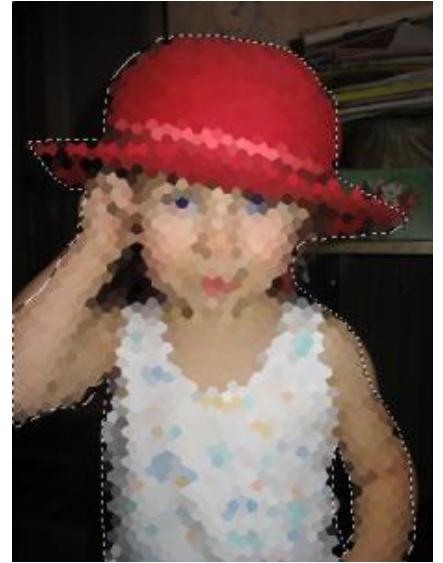
The PixPattern affects to selected area only. The unselected area is still unchanged. The unselected area is shown with red semi-transparent color in main plug-in window. Plug-in deals with the bounding box selection.



Image with selection



The unselected area is filled by semi-transparent red color



Result of the processing

**NOTE:**

If you did not find answer on your questions, write your questions to [support@imageskill.com](mailto:support@imageskill.com) or send them to support forum <http://forum.imageskill.com>